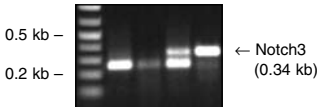


1.5M betaine:            -    +    -    +  
Temp (°C): M    42   42   50   50



**Fig. 3. Flexibility for optimization.** For targets with high G+C contents, such as 0.34 kb Notch3 (G+C: 77%), adding supplements and/or increasing the temperature of the reverse transcription step, may improve specificity. Compare results for standard reaction conditions versus reaction with betaine supplement and elevated temperature.