

synthetic RNA (femtomoles)

20 10 5 2.5 1.3 0.6 0.3 0.2 0.08 0.04 0.02 0.01 0

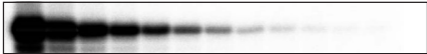


Fig. 4. Linear detection range of the miRtect-IT™ assay.

Assay was performed using the indicated amounts of a synthetic oligonucleotide of mature miRNA sequence. The image was developed after 2 hr exposure.